

Synthesis, crystal structures and NMR and luminescence spectra of lanthanide complexes of 1,4,7,10-tetraazacyclododecane with *N*-methylene(phenyl)phosphinic acid pendant arms †

Jan Rohovec,^a Pavel Vojtíšek,^a Petr Hermann,^a Jiří Mosinger,^a Zdirad Žák^b and Ivan Lukeš^{*a}

^a Department of Inorganic Chemistry, Universita Karlova (Charles University), Albertov 2030, CZ-128 40 Prague 2, Czech Republic

^b Department of Inorganic Chemistry, Masaryk University, Kotlářská 2, CZ-611 37 Brno, Czech Republic

Received 7th July 1999, Accepted 31st August 1999

Complexes of 1,4,7,10-tetraazacyclododecane-1,4,7,10-tetrayltetramethylenetetraakis(phenyl)phosphinic acid) H_4L^1 with yttrium and a number of lanthanides were synthesized and the crystal structures of $Li[LaL^1(H_2O)] \cdot 10H_2O$ and $Li[CeL^1(H_2O)] \cdot 10H_2O$ determined. The complexes are isostructural with *RSRS* configurations at the phosphorus atoms. The ligand is co-ordinated by four nitrogen atoms in a plane and by four phosphinate oxygen atoms in a parallel plane. The planes form a twisted square prismatic co-ordination sphere. A molecule of water capping the O_4 plane completes the co-ordination sphere of both ions. Solution properties of the complexes were investigated by 1H and ^{31}P NMR. In solution six possible isomers with different configurations on phosphorus atoms are in equilibrium. The most abundant shows the *RRRS* configuration. A dynamic behavior similar to lanthanide complexes of 1,4,7,10-tetraazacyclododecane-1,4,7,10-tetraacetic acid is not observed. The NMR as well as luminescence measurements show that no water molecule is co-ordinated directly to the lanthanide ions in solution. The ions Li^+ and Na^+ form stable ion pairs with the complexes in methanol- d_4 solution as confirmed by the lanthanide induced shift of 7Li and ^{23}Na resonances in the presence of paramagnetic lanthanide ions. The ion pairs are not stable in aqueous solution. The alkali metal ion is located close to fourfold magnetic axes of the complexes above the oxygen atoms and between the phenyl rings. Luminescence spectra of $[LnL^1]^-$, $Ln = Eu$ or Tb , indicate low symmetry of the species and co-ordination number 8.

Co-ordination chemistry of yttrium and lanthanide ions with macrocyclic ligands is widely investigated because of the importance of their medicinal and biochemical use, such as gadolinium complexes as contrast agents in magnetic resonance imaging,¹⁻⁴ ^{90}Y complexes in radioimmunotherapy^{2,5} and luminescent europium and terbium complexes as probes.^{2,6-9} To produce complexes for utilisation requires chelates with enhanced stability, selectivity and kinetic inertness. A number of aminopolycarboxylic acids, both acyclic and macrocyclic, were tested and the results reviewed.^{1-4,6,10-12} Today, several contrast agents are in routine clinical use both as anionic complexes ($[Gd(dtpa)(H_2O)]^{2-}$ and $[Gd(dota)(H_2O)]^-$, where $H_3dtpa =$ (carboxymethylimino)bis(ethylenitrilo)tetraacetic acid and $H_4dota =$ 1,4,7,10-tetraazacyclododecane-1,4,7,10-tetraacetic acid) or as neutral species ($[Gd(bm-dtpa)(H_2O)]$ and $[Gd(hp-do3a)(H_2O)]$, where the ligands are bis(methylamide) derivative of H_3dtpa and the hydroxypropyl derivative of H_4dota , respectively). In addition, many derivatives of the ligands were designed, synthesized and studied to improve properties of the contrast agents. The derivatives show different tissue specificity, e.g. those with benzyloxy substituents,¹³ or polymer¹⁴ - or dendrimer¹⁵ -based contrast agents being useful in MRI angiography.

Some years ago a study of azacyclic derivatives of H_4dota with side chains containing a phosphonic acid ($CH_2PO_3H_2$) or phosphinic acid ($CH_2P(R)O_2H$) group was started, in a search

for ligands with properties different from those of the compounds containing acetic acid groups. The investigations of tetrasubstituted phosphorus derivatives of H_4dota have shown¹⁶⁻²⁰ that the lanthanide ion in the complexes does not co-ordinate a water molecule in the inner co-ordination sphere, which is essential for the use as a MRI contrast agent, but the complexes show a larger outer-sphere contribution²⁰ to the relaxivity than their acetic analogues. Variation of the substituent on phosphorus has led to complexes with changed organ specificity²¹ or makes it possible to attach the complexes to monoclonal antibodies.²² On the other hand, highly charged lanthanide complexes of the above phosphonic acid derivatives form stable ion pairs with alkali metal ions even in aqueous solution^{23,24} and $[TmL^{6-}]^{5-}$ is used clinically as a shift reagent for ^{23}Na .²⁵ A gadolinium(III) complex of a tris(phosphonate) derivative of a pyridine-containing tetraazacycle²⁶ shows a short half-time for water exchange in the inner sphere, which is promising for design of new MRI contrast agents.

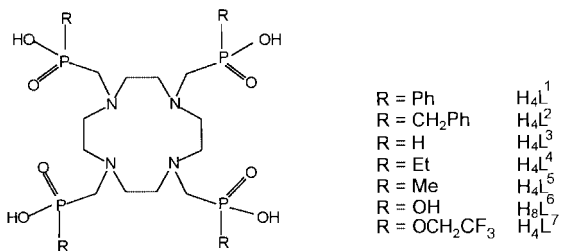
The R group in phosphinic acid derivatives contributes to a change in the ion selectivity and properties of the macrocyclic compound. Therefore, we studied its influence in a series of simple aminomethylphosphinic acids $H_2NCH_2P(R')O_2H$, where $R' = H$, methyl, phenyl, or *tert*-butyl.²⁷ Changes in complexing properties of the simple acids were surprisingly large, the formation constant values increasing in the order phenyl < methyl < *t*-butyl < hydrogen as substituent. Except for $R' = H$, the order follows that of increasing basicity of the acids. Thus, we focused on studying the influence of the methylene(phenyl)-phosphinic acid substituent on the complexing properties of azacycles, and published results dealing with the synthesis and complexing properties of 1,4,7-triazacyclononane and 1,4,7,10-tetraazacyclododecane derivatives with methylenephosphinic acid moieties ($R = CH_2P(H)O_2H$; H_4L^3).²⁸ Recently, we

† Supplementary data available: rotatable 3-D crystal structure diagram in CHIME format. See <http://www.rsc.org/suppdata/dt/1999/3585/>

Also available: torsion angles of the azacycle, orientations of the phosphinic acid group and the McConnell cone. Available from BLDS (No. SUP 57635, 4 pp.). See Instructions for Authors, 1999, Issue 1 (<http://www.rsc.org/dalton>).

reported²⁹ the synthesis, crystal structure and solution properties of 1,4,7,10-tetraazacyclododecane-1,4,7,10-tetra-yl-tetramethylenetetraakis(phenylphosphinic acid) H_4L^1 and 1,4,8,11-tetraazacyclotetradecane-1,4,8,11-tetra-yl-tetramethylenetetra-yl-tetraakis(phenylphosphinic acid). Formulae of the ligands studied in this paper and those of analogous ligands are shown below.

The aim of this paper is to describe new complexes of H_4L^1 with yttrium and lanthanides and, on the basis of the solid structure determined by X-ray analysis, to discuss their NMR properties in solution.



Results and discussion

Synthesis

Synthesis of H_4L^1 followed our procedure.²⁹ Lanthanide complexes with H_4L^1 and their analogues could be prepared by direct reaction of the appropriate lanthanide oxide with a ligand, *e.g.* ref. 30. The reaction usually requires prolonged heating in aqueous solution under reflux. We have tested this route and, in addition to the desired product, found some by-products.³¹ Thus, the reaction of H_4L^1 with chlorides of lanthanides was found to be more convenient, faster and the formation of by-products was considerably reduced. The reaction between the ligand and lanthanide ion probably follows the mechanism proposed for complexes of H_4L^1 .³² The complexation starts in slightly acidic solution accompanied by slow precipitation of an intermediate in which an interaction of phosphinic acid groups with the lanthanide is assumed. The intermediate is amorphous and probably polymeric in nature containing ligand and lanthanide in an approximately 1:1 stoichiometric ratio as confirmed by inductively coupled plasma (ICP)-MS. Upon addition of base, the precipitate quickly dissolves to give a final product with lanthanide ion inside the macrocyclic cavity. In contrast to sodium or potassium salts, lithium salts of the complexes, $Li[LnL^1] \cdot nH_2O$ ($n = 10$ or 11), crystallised from the reaction mixture and hence aqueous LiOH was used for neutralisation of the reaction mixture. In addition, the solubility of LiCl in a methanol-water mixture is much better than that of the other chlorides. The complexes crystallised are hydrates which are stable only under mother-liquor and their dehydration in the air occurs at RT within a few minutes. The purity of the complexes prepared was checked by TLC which proved to be very sensitive to by-products.

The complexes are soluble in methanol and water or in their mixtures. They are stable in solutions in the range pH 5–11 for weeks, as expected for the kind of ligands.³³ Easy formation of the crystalline product is probably caused by the presence of a hydrogen bond network.

Structures of $Li[La(L^1)(H_2O)] \cdot 10H_2O$ and $Li[Ce(L^1)(H_2O)] \cdot 10H_2O$

The compounds were found to be isostructural with two independent molecules in the unit cell. Owing to the instability of the hydrate mentioned in the Experimental section, and consequently the poor quality of the crystals, the *R* factors obtained are rather high. Nevertheless, the results obtained are sufficient for the description of geometry for both compounds. The $Li[La(L^1)(H_2O)] \cdot 10H_2O$ structure is shown in Fig. 1 and Table 1 lists selected bond distances and angles. The ligand

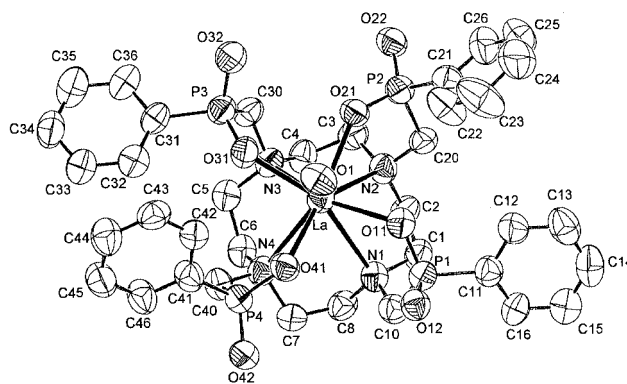


Fig. 1 View of $Li[La(L^1)(H_2O)] \cdot 10H_2O$ with the atom numbering scheme.

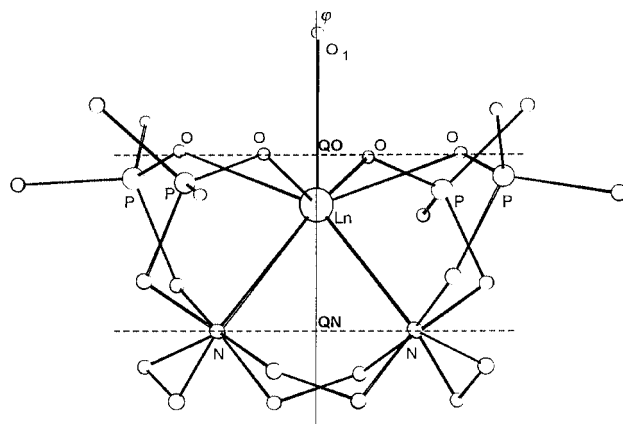


Fig. 2 Lanthanide co-ordination sphere, showing the lanthanide(III) atom between the N_4 and O_4 planes. QN is a centroid of N1, N2, N3 and N4 atoms. QO is a centroid of O11, O21, O31 and O41 atoms.

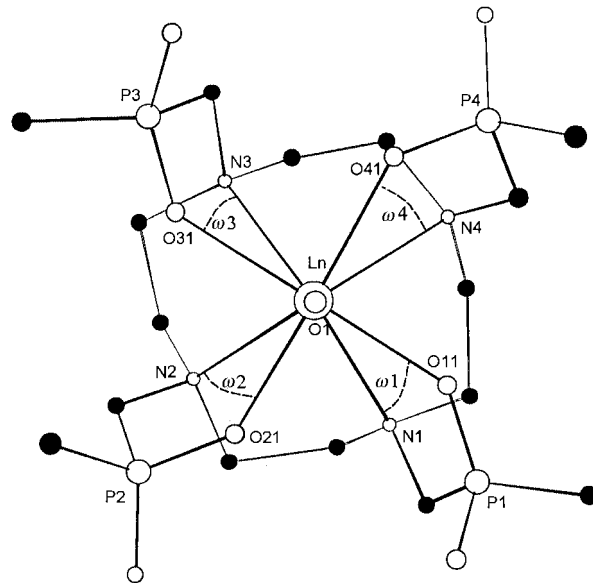


Fig. 3 Orientation of the methylenephosphinic acid pendant arms. Twist angles ω are listed in Table 2.

anion $(L^1)^{4-}$ is co-ordinated to the lanthanide ion by four nitrogen atoms and four phosphinate oxygen atoms. The nitrogen atoms as well as oxygen atoms form bases N_4 and O_4 that are planar and parallel (less than $0.9(0.3)^\circ$) within experimental error. The lanthanide lies between these planes, closer to the O_4 base as is shown in Fig. 2. The twist angle of the bases around the local fourfold axis is about 25° (see Fig. 3 and Table 2), *i.e.* lying between those in the ideal prism, 0° , and antiprism 45° , a little closer to the latter. Thus, the arrangement should be

Table 1 Selected bond lengths (Å) in Li[La(L¹(H₂O))]₂·10H₂O and Li[Ce(L¹(H₂O))]₂·10H₂O

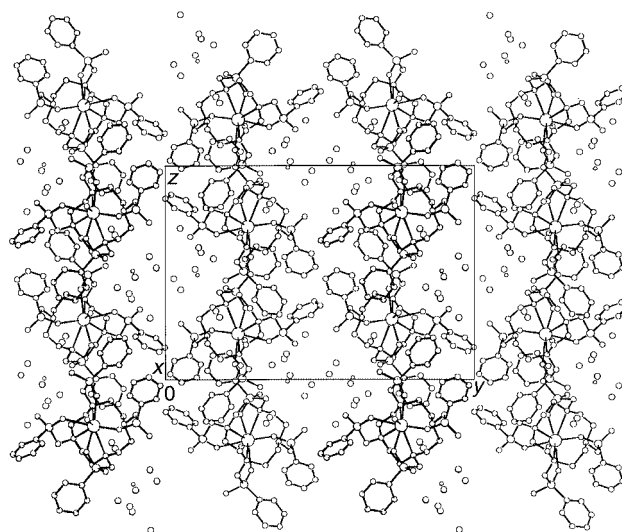
	La		Ce	
	molecule A	molecule B	molecule A	molecule B
Ln–O(1)	2.650(6)	2.625(6)	2.652(7)	2.583(7)
Ln–O(11)	2.460(6)	2.449(6)	2.435(6)	2.404(6)
Ln–O(21)	2.473(5)	2.476(6)	2.445(5)	2.458(6)
Ln–O(31)	2.436(6)	2.437(6)	2.413(6)	2.415(6)
Ln–O(41)	2.439(5)	2.426(7)	2.414(6)	2.400(6)
Ln–N(1)	2.859(6)	2.855(6)	2.847(6)	2.847(7)
Ln–N(2)	2.890(6)	2.876(7)	2.874(6)	2.883(6)
Ln–N(3)	2.869(6)	2.850(7)	2.833(7)	2.838(8)
Ln–N(4)	2.889(7)	2.869(7)	2.876(7)	2.863(7)

Table 2 Parameters of the co-ordination polyhedrons and conformation of macrocyclic rings

	La		Ce	
	molecule A	molecule B	molecule A	molecule B
Ln–Q(O)	0.802(1)	0.789(1)	0.804(1)	0.793(1)
Ln–Q(N)	1.931(1)	1.920(1)	1.911(1)	1.840(1)
Q(O)–Q(N)	2.730(1)	2.708(1)	2.713(1)	2.639(1)
Q(O)–Ln–Q(N)	174.0(1)	178.4(1)	176.8(1)	173.2(1)
O(1)–Ln–Q(N)	174.7(2)	178.1(2)	175.1(2)	176.5(2)
O(1)–Ln–Q(O)	10.9(2)	3.4(2)	7.8(2)	3.3(2)
Twist angle of				
pendant 1	23.7(2)	–23.6(3)	25.2(2)	–24.9(3)
pendant 2	26.4(2)	–26.2(2)	26.6(2)	–21.4(2)
pendant 3	23.2(3)	–25.4(2)	23.8(3)	–25.1(2)
pendant 4	24.6(2)	–27.2(2)	25.3(2)	–31.8(2)

termed the square antiprism. A molecule of water capping the O₄ base of the twisted prism completes the co-ordination sphere of the lanthanide. The average bond distances of the lanthanum ions and the donor atoms of the ligands in the unit cell are a little longer than for cerium (La–O 2.45, Ce–O 2.42, La–N 2.87, Ce–N 2.86 Å).

A comparison of the co-ordination polyhedron of [La(L¹)(H₂O)][–] with those of [La(L²)(H₂O)][–] (ref. 30) and of complexes of H₄L² with other lanthanides^{18,30} shows that the N₄ square remains virtually the same with the common square (3,3,3,3) conformation of the [12ane]N₄ ring. The conformations of the tetraaza rings of both the co-ordination polyhedra in the elemental unit cell are different. One co-ordination polyhedron corresponds to the Δ conformation, the other to the Λ conformation. The average La–N distance in [La(L¹)(H₂O)][–] (2.87 Å) is a little higher than in [La(L²)(H₂O)][–] (2.80 Å)³⁰ and the average La–O_(P–O) distances are virtually the same. The La–O_w distances in [La(L¹)(H₂O)][–], 2.65 and 2.62 Å, are also very close to that in [La(L²)(H₂O)][–], 2.66 Å,³⁰ however, they are longer than in Na[La(Hdota)La(dota)]·10H₂O.³⁴ A comparison of the Ln–O_w distances indicates that the co-ordination spheres of small lanthanides such as Tm or Lu in [LnL¹][–], as in [LnL²][–], would not contain a molecule of water. The conformations of the pendant arms are the same; however, the orientation of the phosphinate groups in [La(L¹)(H₂O)][–] corresponds to the formation of the *RSRS* diastereoisomer, different from the *RRRR* or *SSSS* diastereoisomers described^{18,30} for [Ln(L²)(H₂O)][–] structures. This dissimilarity probably follows from hydrophobic interactions of phenyl groups and ionic interactions through oxygen atoms of phosphinic acid groups, Li⁺ and crystal water mentioned hereinafter. The benzyl substituent in H₄L² is more flexible due to the methylene bridge, and thus has more possibilities for non-covalent hydrophobic inter-

**Fig. 4** Crystal packing of Li[La(L¹(H₂O))]₂·10H₂O.

actions of phenyl rings. The interactions probably reflect the value of the twist angle of the bases found, which is rather lower than those observed for [Ln(L²)(H₂O)][–] structures.^{18,30}

In both the structures studied the co-ordination polyhedrons are connected through hydrophobic interaction of phenyl groups as is shown in Fig. 4. Non-co-ordinated phosphinate oxygen atoms make hydrophilic infinite channels which are parallel to the monoclinic axis. The channels are occupied by molecules of crystal water, hydrogen bonded to each other (O_w···O_w in the range 2.7–3.2 Å) and, some of them, to the non-co-ordinated oxygens (O_{P–O}···O_w 2.6–3.0 Å). The Li⁺ ions should be located in these channels; however, their positions could not be determined in the X-ray experiment at *R* > 0.1. This structure motif is the same as in [LnL²][–],^{18,30} but the diameter of the channels is smaller (5–6 Å). The size of the channels is probably associated with the fact that the crystalline product was only obtained with Li⁺ ions as outer-sphere cations. Water molecules have enough space to move along the channels and this probably causes the mentioned instability of the hydrates. The channel content gives ample possibilities for disorder (both static and dynamic) and makes structure solutions difficult. For this reason, a precise determination of the hydrate stoichiometry in both compounds is beyond the X-ray experiment. We can only estimate the stoichiometry as being close to Li[Ln(L¹)(H₂O)]₂·10H₂O.

NMR spectra

From the structures Li[La(L¹)(H₂O)]₂·10H₂O and Li[Ce(L¹)(H₂O)]₂·10H₂O, it is known that the orientation of the phosphinate groups in the solid state is *RSRS*, thus two signals in the ³¹P-{¹H} CP-MAS NMR spectrum are expected. If Li⁺ is bonded to one phosphinate then three phosphorus atoms are non-equivalent and thus three signals should be observed. Three peaks (δ 33.05, 31.85 and 29.16) were observed in the spectrum of Li[La(L¹)(H₂O)]₂·*n*H₂O and also in that spectrum of Li[Lu(L¹)]₂·*n*H₂O (δ 28.08, 22.49 and 20.51). This points to a similar structural motif in the solid state for all the lanthanide complexes. In addition, in the spectrum of Li[Y(L¹)]₂·*n*H₂O, four peaks at δ 32.15, 31.35, 26.11 and 24.02 were found. A comparison with the spectra of La^{III} and Lu^{III} indicates that the peak above δ 30 is split, probably due to an additional interaction of the phosphinate, e.g. Li⁺ or with water molecules.

Co-ordination of each phosphinate group of the ligand to Ln^{III} produces an asymmetric center at each phosphorus. If the *R* or *S* orientation of each group is independent of the orientation of the other phosphinates then six diastereoisomers are possible, *RRRR*, *RRRS*, *RRSS*, *RSRS*, *RSSS* and *SSSS*. In solution, a reorientation of the *RSRS* configuration, which was

Table 3 Relation between the *R/S*, Λ/Δ isomers and the number of signals in the ^{31}P NMR spectrum

Isomer	Conformation of pendant arms	Number of non-equivalent ^{31}P nuclei
<i>RRRR</i>	Δ	1
<i>RRRS</i>	Δ	4
<i>RSRS</i>	Δ	2
<i>RRSS</i>	Δ	4
<i>SSSR</i>	Δ	4
<i>SSSS</i>	Δ	1
		Total: 16

found in the solid state, occurs and formation of a mixture of diastereoisomers at the phosphorus atoms is observed. The NMR results indicate that equilibrium is usually reached in 30 min at room temperature. The solution would contain the six isomers. In addition to the *R* or *S* orientation of the phosphorus atoms, two possible orientations, clockwise (Δ) and counterclockwise (Λ), of the methylene groups in the pendant arms are possible. If the Λ and Δ isomerisation is included in the consideration, then the Δ -(*RRRR*) is an enantiomer to the Λ -(*SSSS*) and analogously for the other combinations. The enantiomers are not distinguishable by NMR, however the enantiomeric pair Δ -(*RRRR*)/ Λ -(*SSSS*) is distinguishable from Δ -(*SSSS*)/ Λ -(*RRRR*). For this reason, only one isomeric form (Δ) is considered in the following text and thus *RRRR* refers to the Δ -(*RRRR*)/ Λ -(*SSSS*) enantiomeric pair.

Thus, in the ^{31}P NMR spectrum of the six isomers, one signal would be observed for *RRRR* and for *SSSS* isomers, four signals for *RRRS*, *RRSS* and *RSSS* isomers and two for the *RSRS* isomer, the total number of peaks being³⁵ 16, as shown in Table 3. The intensities of the signals for each isomer should be the same; however, the abundance of the isomers in solution would not be the same. In the literature^{18,30} only *RRRR* isomers of lanthanide complexes with analogous ligands were observed in the solid state and were also predominant in solution. We assume that in solutions of H_4L^1 lanthanide complexes, where no interactions of phenyls are likely, the *RRRR* is also the dominant species and the abundance of the other isomers roughly decreases with the number of *S*-oriented phosphinates. The isomerisation at the phosphorus atom together with the Δ or Λ conformation of the cyclododecane ring is discussed in detail on the basis of ^{19}F NMR spectra of lanthanide(III) complexes with H_4L^7 by Kim *et al.*³⁵ They confirmed that the abundance of complexes with the *RRRR* configuration is the highest but can be altered in the presence of other molecules, such as cationic surfactants (*e.g.* cetylpyridium chloride).

We studied ^{31}P NMR spectra of methanolic and aqueous solutions of the lanthanide complexes with H_4L^1 . All the sixteen ^{31}P NMR peaks were observed in a methanolic solution of $\text{Li}[\text{Lu}(\text{L}^1)]$. The spectrum is shown in Fig. 5 together with a tentative assignment of the signals to the isomers. It is apparent that no species is dominant in solution as in spectra¹⁸ of $[\text{Lu}(\text{L}^2)(\text{H}_2\text{O})]^-$. According to the intensities observed (Fig. 5) and assumptions mentioned above, the abundance of the isomers decreases in the order *RRRS* > *RRRR* > *RRSS* > *RSRS* > *RSSS* > *SSSS*. The character of the spectrum in aqueous solution is similar, but the intensities and positions of the peaks are shifted. Thus, the *RRRS* (4 peaks) seems to be dominant followed by the *RSRS* isomer (2 peaks). The abundance of the *RRRR* isomer decreased and a peak corresponding to the *SSSS* isomer almost disappeared. With increasing temperature, broadening and coalescence of some peaks occur, and thus only eight broad peaks were observed at 75 °C.

In spectra of $\text{Li}[\text{Y}(\text{L}^1)]$ in both methanolic and aqueous solution, a coupling $^2J_{\text{YP}} \approx 5$ Hz was observed for all peaks. This points to the fact that all phosphinic groups are co-ordinated in solution. The spectrum of a methanolic solution of the com-

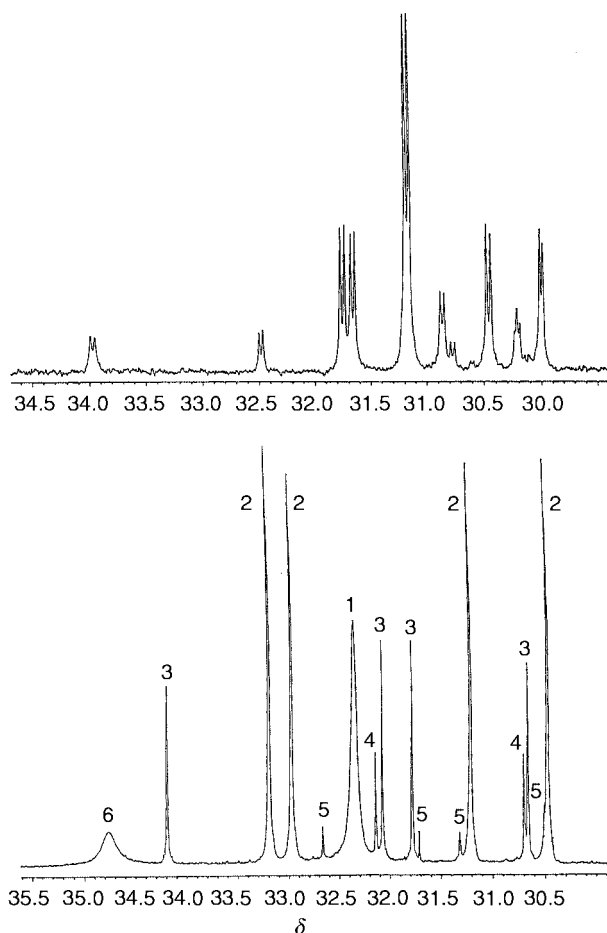


Fig. 5 The ^{31}P NMR spectra of $\text{Li}[\text{Y}(\text{L}^1)]$ (upper) and $\text{Li}[\text{Lu}(\text{L}^1)]$ (lower) in methanolic solutions. In the lower spectrum 1 corresponds to *RRRR*, 2 to *RRRS*, 3 to *RRSS*, 4 to *RSRS*, 5 to *RSSS* and 6 to the *SSSS* isomer.

plex is also shown in Fig. 5. In it the *RRRS* (four doublets) and *RRRR* (one doublet) isomers are dominant. The abundance of the other isomers is lower than in $\text{Li}[\text{Lu}(\text{L}^1)]$ solutions. In the NMR spectrum of a methanolic solution of $\text{Li}[\text{La}(\text{L}^1)(\text{H}_2\text{O})]$ four broad peaks only were found.

The ^{31}P NMR spectra were also investigated for complexes of paramagnetic lanthanides in both methanolic and aqueous solutions. A mixture of the isomers was observed in all samples as is shown in Fig. 6 for $\text{Li}[\text{Eu}(\text{L}^1)]$. The abundance of the isomers roughly corresponds to those found for complexes Lu and Y. Changes in the ^{31}P NMR chemical shift of the major *RRRS* isomer for a lanthanide is shown in Fig. 7. It is apparent that the maximum or minimum values of the ^{31}P NMR chemical shift were found for Tb^{3+} and Dy^{3+} , or Tm^{3+} , respectively. According to the literature,³⁶ the observed chemical shift δ_{obs} may be quantified by eqn. (1) where δ_{dia} corresponds to the

$$\delta_{\text{obs}} = \delta_{\text{dia}} + \delta_{\text{dip}} + \delta_{\text{con}} \quad (1)$$

shift of an analogous diamagnetic ion (La^{3+}), δ_{dip} is the pseudo-contact term and δ_{con} the contact term. Generally, the observed paramagnetic shift (LIS = lanthanide induced shift) is given by the sum of pseudo-contact and contact contributions, eqn. (2). Eqn. (2) may be transformed, as shown in Bleaney *et al.*,³⁷

$$\text{LIS}_{\text{obs}} = \text{LIS}_{\text{pc}} + \text{LIS}_{\text{c}} \quad (2)$$

into eqn. (3) where G is the geometrical term, F is a term

$$\text{LIS}_{\text{obs}} = GC_j + F\langle S \rangle_{\text{av}} \quad (3)$$

containing the hyperfine coupling constant, C_j is a numerical

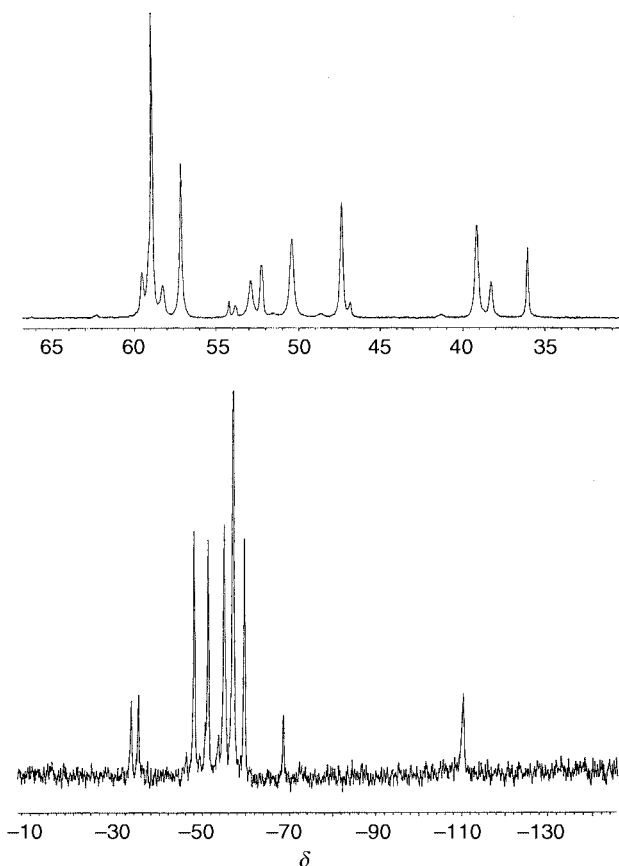


Fig. 6 The ^{31}P NMR spectra of $\text{Li}[\text{EuL}^1]$ (upper) and $\text{Li}[\text{YbL}^1]$ (lower) in methanolic solutions.

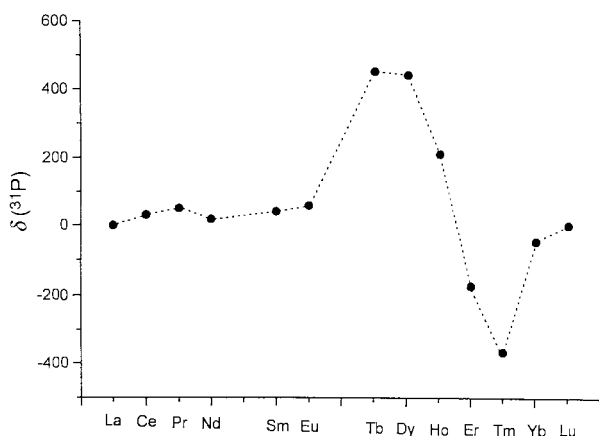


Fig. 7 Dependence of ^{31}P NMR shift of $\text{Li}[\text{LnL}^1]$ on lanthanide in aqueous solutions ($RRRR$ isomer).

coefficient derived from matrix elements of J and $F\langle S \rangle_{\text{av}}$ is the thermal average spin moment. Both C_j and $\langle S \rangle_{\text{av}}$ are known for each lanthanide ion.³⁶ Eqn. (3) may be transformed into (4) and (5).

$$\text{LIS}_{\text{obs}}/\langle S \rangle_{\text{av}} = (GC_j/\langle S \rangle_{\text{av}}) + F \quad (4)$$

$$\text{LIS}_{\text{obs}}/C_j = G + F(\langle S \rangle_{\text{av}}/C_j) \quad (5)$$

An analysis of the ^{31}P NMR data for aqueous solutions of $[\text{LnL}^1]^-$ complexes using eqn. 4 is plotted in Fig. 8. The results found for methanolic solution are very close to those for aqueous solutions. The plot using eqn. (4) suggests that lanthanides fall on one straight line with a slope (G term) about 4 and an intercept about zero. The single straight line indicates the same co-ordination sphere for all lanthanide ions. This is different

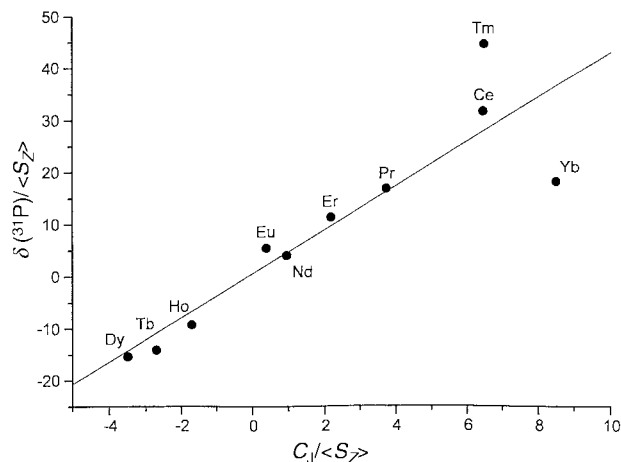


Fig. 8 Analysis of the ^{31}P NMR data for aqueous solutions of $[\text{LnL}^1]^-$ complexes using the equation $\delta(^{31}\text{P})/\langle S \rangle_{\text{av}} = GC_j/\langle S \rangle_{\text{av}} + F$.

from the results observed for $[\text{LnL}^2]^-$ complexes.^{18,30} The plot of that series fell into two straight lines, one line connecting Ce, Pr and Nd, ions with co-ordination number 9, the other connecting ions with co-ordination number 8, from Dy to Yb. A comparison with the literature³⁰ results for $[\text{LnL}^2]^-$ complexes indicates a similar value of the slopes for both our and Aime's series for ions from Dy to Yb. Thus, the co-ordination number in complexes $[\text{LnL}^1]^-$ in solution would be 8 even for Ce, Pr and Nd. From this point of view, water is not co-ordinated to cerium in aqueous solution as was found in the solid state. An explanation follows from the hydrophobic interaction of phenyls in an isolated molecule and the interaction results in hindrance of the O_4 base in solution. A similar behaviour of the phenyls was observed in ^{31}P NMR spectra for conformation changes of H_4L^1 .²⁹ In contrast to $[\text{TmL}^2]^-$,³⁰ the ^{31}P NMR shift of $[\text{TmL}^1]^-$ does not fit the straight line observed. This is probably due to the high sensitivity of its signals to temperature.³⁸

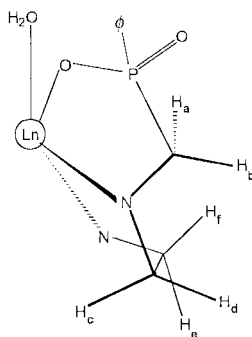
The plot according to eqn. (5) shows that it is not possible to find any correlation between δ_p/C_j and $\langle S \rangle/C_j$. This corresponds to the small value of the F term estimated from eqn. (4). As expected, the contact term is very small in comparison with the pseudo-contact term.

In addition, ^7Li NMR spectra of all the compounds in methanolic solution were investigated; the dependence of ^7Li NMR chemical shifts on the lanthanide ion is similar to those found for ^{31}P NMR spectra, but the sign of ^7Li LIS_{obs} is opposite. As expected, a maximum value of δ_{Li} was found for $\text{Li}[\text{DyL}^1]$ and $\text{Li}[\text{TmL}^1]$. The opposite sign in comparison with δ_p can be explained by the different position of ^7Li and ^{31}P nuclei in space determined by the McConnell cone.³⁶ In addition, Li^+ is located close to the negatively charged phosphinic acid groups in methanolic solution. When a methanolic solution of NaClO_4 was added to a solution of $\text{Li}[\text{LnL}^1]$ the value of δ_{Li} decreased to zero due to substitution of Li^+ with Na^+ ions. In aqueous solutions, the δ_{Li} signals lie in a narrow region close to zero. This indicates dissociation of the ionic pair and formation of $\text{Li}(\text{H}_2\text{O})_n^+$ species which does not interact with the complex.

The ^1H NMR spectra of $\text{Li}[\text{Ln}(\text{L}^1)]$, $\text{Ln} = \text{La}, \text{Y}$ or Lu , were also measured; however, they are very complicated due to a number of diastereoisomers in solution. Overlapping of the signals was observed in the spectra of Y and Lu and even after an H,H-COSY experiment the signals could not be assigned. In ^1H NMR spectra of $\text{Li}[\text{Ln}(\text{L}^1)]$ complexes where Ln is a paramagnetic lanthanide ion the paramagnetic shifts depend on the position of the hydrogen atoms relative to the magnetic axis of the complex. Thus, for the selected hydrogen atoms, the same dependence of the shifts (according to eqn. (4)) on the lanthanide as found for ^{31}P NMR shifts was observed. In contrast to ^{31}P NMR spectra, a number of isomers were not determined

because of the mentioned number of peaks. The paramagnetic broadening of the peaks increases with increasing temperature for most lanthanides. On the other hand, the character of the spectra is virtually the same in the temperature range 25–50 °C, the positions of the peaks being very temperature sensitive.³⁸

The spectrum of Li[Eu(L¹)] in methanol-*d*₄ solution was investigated in detail due to the convenient relaxation time and a very low paramagnetic broadening of the signals. The number of signals is high, but the scale is very broad and thus the peaks are well distinguished. It is possible to determine separate groups of the signals corresponding to the atoms from H_c to H_f. Their assignment is also confirmed by an H,H-COSY experiment at 25 °C, corresponding to the literature results.¹⁸ In the spectrum, 12 cross-peaks were found from the H_a–H_b correlation and this points to 12 different types of the pendant arms. The number of cross-peaks in this region corresponds to the number of non-equivalent phosphinic acid groups found in the ³¹P NMR spectrum and confirms the *R/S* isomerisation at the phosphorus atoms and the Λ and Δ isomerism at the arms. Correlation between hydrogen atoms of the ring was also studied using the cross-peaks corresponding to H_{a-f} in the H,H-COSY spectrum. There were found 24 correlations from H_c to H_d and to H_f. No interaction with the H_e of the macrocycle was observed, probably due to the H_bCCH_e torsion angle and Karplus–Conroy curve.³⁹ Integral intensities of the peaks indicate that the abundance of the isomers decreases from the *RRRS* (4 peaks) to the *RRRR* isomer (1 peak), *etc.*, as was observed in ³¹P NMR spectra.



The ¹H NMR spectra of Li[Eu(L¹)] in D₂O solution are similar to those measured in methanol-*d*₄. The peaks are shifted, the scale (+30 to –17 ppm) being not as large as in methanol; however, the abundance of the isomers is the same. As in spectra of other lanthanides, the spectrum is temperature-sensitive for both $\delta(\tau)$ and $\Delta\nu_{1/2}$. Coalescence of the peaks in the separated groups is observed at 95 °C; however, the peaks are broad ($\delta\nu > 150$ Hz).

Luminescence spectra

The phenyl groups bonded to the phosphorus atoms show a characteristic absorption at 254 nm and hence the absorption band could be used as an antenna for excitation of a proximate lanthanide ion.⁶ The emission spectra of Li[Eu(L¹)]·*n*H₂O and Li[Tb(L¹)]·*n*H₂O in water are depicted in Fig. 9. The bands observed consist of ⁵D₀–⁷F_{*J*} transitions and ⁵D₄–⁷F_{*J*} transitions.

At 579 nm the ⁵D₀–⁷F₀ transition is found as a single, quite intense peak without shoulder or splitting. This transition is electric dipole allowed and can only be observed in low-symmetry environments (less than *D*₃), particularly when the molecule in question has no inversion centre, and its intensity increases with decreasing symmetry of the complex.⁴⁰ The relatively high intensity of the peak in comparison with that of the next transition (⁵D₀–⁷F₁) also indicates the low symmetry of the complex species in solution. This is different from the symmetric complex anion [Eu(L²)][–] where no peak for ⁵D₀–⁷F₀ was found.¹⁸

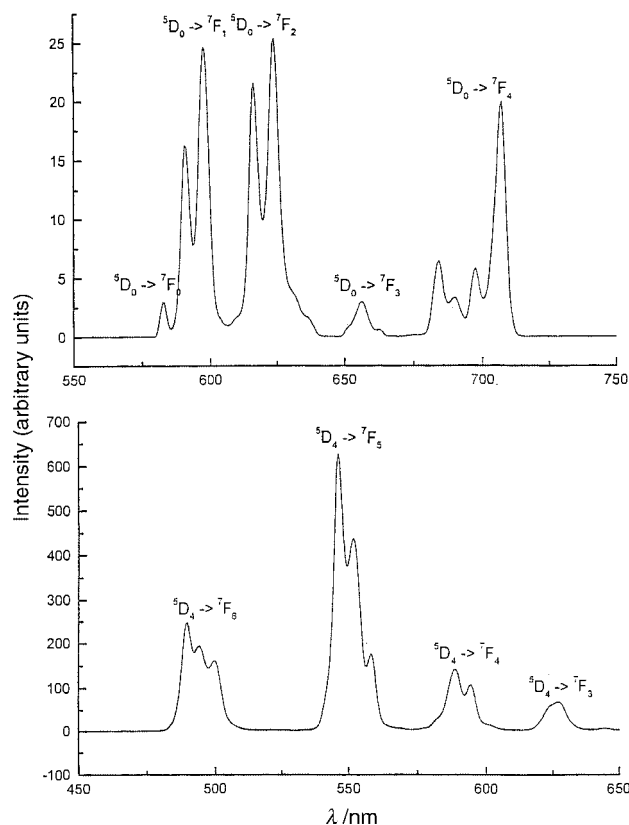


Fig. 9 Luminescence spectra of Li[Eu(L¹)] (upper) and Li[Tb(L¹)] (lower) in aqueous solutions.

In the ⁵D₀–⁷F₁ region two well separated singlets of non-equal intensity were found. The presence of two signals leads to the conclusion that the symmetry of the emitting species is *C*₃ or higher.^{18,40} The ⁵D₀–⁷F₁ transition is not environmentally sensitive. In contrast to [Eu(dota)(H₂O)][–],^{40b} we did not observe small signals in the ⁵D₀–⁷F₁ part of the spectrum, which were attributable to the presence of isomers with different torsion angles θ of pendant arms. The separation of the two singlets in the ⁷F₁ multiplet is proportional to the crystal field coefficient *A*₂⁰,⁴¹ similarly to the dipolar contribution to the paramagnetic NMR shift.³⁷ The separation of the components in the ⁷F₁ multiplet of Li[Eu(L¹)] is 197 cm^{–1}, close to the 190 cm^{–1} found for [Eu(dota)(H₂O)][–] and different from [Eu(H₂O)_{*n*}]³⁺, for which the separation is only 40 cm^{–1}. This separation corresponds to the predominant contribution of the dipolar shift to the LIS, as was also observed in the NMR spectra.

The electric dipole allowed ⁵D₀–⁷F₂ transition is known to be hypersensitive, its intensity being strongly affected by the polarisability of the ligand.^{18,40} It is absent if the Eu³⁺ ion is in an inversion centre. For phosphinate complexes of the [Eu(dota)(H₂O)][–] type this transition produces one of the most intense bands in the spectrum.²⁰ In the ⁵D₀–⁷F₂ region of the luminescence spectrum of [EuL¹][–] two well separated singlets are found whose intensities are comparable with that for the ⁵D₀–⁷F₁ transition. This is consistent with the absence of an inversion centre in the emitting species and polarisability of the ligand, enhanced by the presence of phenyl rings on phosphorus atoms.

The ⁵D₀–⁷F₃ transition is of low intensity in the spectrum, similarly to other [Eu(dota)(H₂O)][–] type complexes.^{40b} The intensity of the ⁵D₀–⁷F₄ multiplet in Li[Eu(L¹)] is smaller in comparison with that of ⁵D₀–⁷F_{1,2}, in contrast to similar complexes.^{40b}

In the spectrum of Li[Tb(L¹)] all the ⁵D₄–⁷F_{*J*} transitions, where *J* = 3, 4, 5, or 6, were observed. The spectrum is the same as that of analogous [TbL¹][–],^{18,30,42} which corresponds to the

fact that the luminescent spectra of Tb^{3+} are not as sensitive to changes outside the first co-ordination sphere.

Luminescence spectroscopy was used for estimation of the number of water molecules co-ordinated to the lanthanide in aqueous solutions. The lifetimes of the excited state in $\text{H}_2\text{O}/\text{D}_2\text{O}$ are 1.18/2.01 ms (transition ${}^5\text{D}_0\text{--}{}^7\text{F}_1$, 598 nm, pH 7) for $[\text{EuL}^1]^-$ and 4.10/4.31 ms (${}^5\text{D}_4\text{--}{}^7\text{F}_5$, 546 nm, pH 7) for $[\text{TbL}^1]^-$. According to Horrocks's equation,⁴³ the numbers of the co-ordinated water molecules determined are 0.4 for $[\text{EuL}^1]^-$ and 0.1 for $[\text{TbL}^1]^-$ with an accuracy ± 0.5 . If the number of water molecules was estimated according to the recent equation,^{44a} then 0.12 was found for $[\text{EuL}^1]^-$ and 0 for $[\text{TbL}^1]^-$. Thus, using Horrocks's equation the co-ordination of water cannot be excluded; using the equation from Parker's group indicates that no molecule of water is co-ordinated to the lanthanide.

From the literature,⁴⁴ it is well known that luminescence spectra of some Eu^{3+} and Tb^{3+} complexes with 1,4,7,10-tetraazacyclododecane derivatives depend on pH, concentration of O_2 in solution, and possibly on other factors. We have tested the sensitivity to pH and O_2 ; however, no influence of O_2 concentration or pH in the range of 2–11 was observed.

Conclusion

The X-ray analysis of $\text{Li}[\text{Ln}(\text{L}^1)(\text{H}_2\text{O})]\cdot 10\text{H}_2\text{O}$ complexes, where $\text{Ln} = \text{La}$ or Ce , showed analogous ligand co-ordination, that found in similar complexes. The co-ordination sphere is completed by a water molecule. In contrast to previously studied lanthanide complexes with macrocyclic ligands bearing phosphinic acid pendant arms, the conformation at the phosphorus atoms is *RSRS*.

In solution, the *RSRS* form isomerises. Probably due to hydrophobic interaction of phenyl groups, a full set of the possible isomers is formed. The LIS_{obs} contributions obtained from the ${}^{31}\text{P}$ NMR measurements indicate co-ordination number 8 for all lanthanides in aqueous solution. The result points to a loss of the co-ordinated water in solution. This effect is explained by hydrophobic interaction among the phenyls above the O_4 plane and repulsion of the water molecule. The complex anion $[\text{LnL}^1]^-$ forms stable ion pairs with both Li^+ and Na^+ in methanolic solutions.

In luminescence spectra of $[\text{LnL}^1]^-$, $\text{Ln} = \text{Eu}$ or Tb , all transitions expected were found confirming a relatively low symmetry of the Eu^{3+} species. The estimated co-ordination number determined from the luminescence lifetime of the ${}^5\text{D}_0$ and ${}^5\text{D}_4$ excited states is 8, verifying that no water molecule is co-ordinated to the Ln^{3+} in solution.

Experimental

The ligand $\text{H}_4\text{L}^1\cdot 4\text{H}_2\text{O}$ was synthesized using our procedure.²⁹

Preparation of complexes $\text{Li}[\text{LnL}^1]\cdot n\text{H}_2\text{O}$

These complexes were prepared starting from the appropriate lanthanide oxide (Ln_2O_3 for Y , La , Nd , Sm , Eu , Gd , Dy , Ho , Er , Tm , Yb or Lu , Pr_6O_{11} or Tb_4O_7) or chloride ($\text{CeCl}_3\cdot 7\text{H}_2\text{O}$) which was dissolved in concentrated hydrochloric acid by warming on an oil-bath. The solution formed was evaporated to dryness using a rotary evaporator. The residue was dissolved in 80% (v/v) aqueous methanol. A stoichiometric amount of H_4L^1 dissolved in 40% aqueous MeOH was added and the mixture heated to 50 °C. Then, 1% aqueous LiOH was added very slowly while stirring (approximately during 20 min) until the pH reached 8–9. During this addition a white precipitate was formed at pH 7, which was redissolved at higher pH. The slightly turbid solution obtained was filtered through a filter-paper (blue strip) and allowed to crystallise at laboratory temperature. The first crop of crystals (well formed prisms) was separated and the mother liquor afforded pure $\text{Li}[\text{LnL}^1]\cdot n\text{H}_2\text{O}$ ($n \approx 11$) in the form of long thin needles, which were filtered off.

During drying in air a loss of crystal water occurred and $\text{Li}[\text{LnL}^1]\cdot 6.5\text{H}_2\text{O}$ was formed. Analytical data (C,H,N) of these compounds are in accord with the formulae given.

Their purity (especially with respect to non-co-ordinated Ln^{3+} and by-products) was verified by TLC in water– CH_3CN –*t*-BuOH 4:1:1 (v/v), using detection with xylenol orange and UV. The R_f of non-bound Ln^{3+} , a by-product and $\text{Li}[\text{LnL}^1]$ are 0, 0.4 and 0.6 respectively. The complexes are almost insoluble in higher alcohols and less polar organic solvents. They have the same colours as hydrated Ln^{3+} ions. After formation, these compounds extremely easily lose water of crystallisation. Single crystals for X-ray diffraction studies were prepared in the same manner.

NMR measurements

The ${}^1\text{H}$ and ${}^{31}\text{P}$ NMR spectra were recorded on a Varian Unity Inova 400 spectrometer in CD_3OD or D_2O solutions at 25 °C (operating frequencies 399.96 and 161.907 MHz), with *t*-BuOH as internal standard for ${}^1\text{H}$ measurements and 85% H_3PO_4 as external standard for ${}^{31}\text{P}$. The 5 mm broad band probe was used. The spectral window used was 100 kHz and temperature controlled by a VT regulator, containing a thermocouple calibrated using MeOH and $\text{HOCH}_2\text{CH}_2\text{OH}$ according to a literature procedure.⁴⁵ The ${}^7\text{Li}$ and ${}^{23}\text{Na}$ NMR spectra (operating frequencies 155.44 and 105.75 MHz) were measured using the full substitution method, delay time 1 s and LiCl in D_2O and NaCl in D_2O (1 mol dm^{-3}), as external references on a Varian Inova 400 spectrometer at 25 °C. The spectral width was ± 10 ppm. The ${}^{31}\text{P}$ CP/MAS NMR spectra of solid samples were measured at room temperature using a standard procedure (161.9 MHz, spinning 4 kHz, contact time 0.5 s and repetition time 8 s with CaHPO_4 as an external standard). The 1-D NMR spectra of paramagnetic complexes were measured at a 100 kHz spectral window and TOF parameter ± 50 kHz first to find all of the signals. Then these parameters were optimised. The 2-D experiment ($\text{H}_1\text{H}_2\text{-COSY}$) on $[\text{EuL}^1]^-$ was recorded at 399.961 MHz and at 25 °C. Data were collected with 1024 increments in F_2 , 2048 points in both F_1 and F_2 . The delay time between pulses was 0.75 s. The data obtained were processed using exponential weighting and a sine bell function in F_2 , while in F_1 a line broadening function and shifted sine bell function were used. Variable-temperature experiments were carried out on a 5 mm broad band VT probe, the thermocouple being calibrated with methanol and ethylene glycol using published procedure.

Luminescence spectra

Luminescence experiments were carried out on a Perkin-Elmer LS 50B luminescence spectrometer in a 1 cm cell. The excitation wavelength was 250 nm for complexes of Eu and 265 nm for Tb . Europium(III) emission spectra were recorded in the range 550–900 nm, terbium spectra in the range 450–760 nm, using a 10 nm excitation slit, 2.5 nm emission slit, 0.1 ms delay time and 430 nm filter in both cases. The luminescence decay was observed up to 7.7 ms for Eu and 19 ms for Tb .

Crystallography

The well formed but highly unstable (due to the loss of solvent molecules) crystals of $\text{Li}[\text{La}(\text{L}^1)(\text{H}_2\text{O})]\cdot 10\text{H}_2\text{O}$ and $\text{Li}[\text{Ce}(\text{L}^1)(\text{H}_2\text{O})]\cdot 10\text{H}_2\text{O}$ were obtained by slow evaporation of the solvent mixture (MeOH –water 1/1). Data were collected on a "KUMA kappa axis" (Poland) four circle diffractometer equipped with a CCD area detector (resolution 16.7 pixels (mm)). Selected crystallographic data for both compounds are listed in Table 4.

Hydrogen atoms in CH_2 and CH fragments were included in calculated positions (SHELXL 97);⁴⁶ however, hydrogen atoms from the solvate water molecules, similarly to Li^+ ions, could not be found due to the poor quality of the data and a number of possible disorders. We tried to refine the occupancy of all

Table 4 Experimental data for the X-ray diffraction studies of $\text{Li}[\text{LaL}^1(\text{H}_2\text{O})] \cdot 10\text{H}_2\text{O}$ and $\text{Li}[\text{CeL}^1(\text{H}_2\text{O})] \cdot 10\text{H}_2\text{O}$

Formula	$\text{C}_{36}\text{H}_{66}\text{LaLiN}_4\text{O}_{19}\text{P}_4$	$\text{C}_{36}\text{H}_{66}\text{CeLiN}_4\text{O}_{19}\text{P}_4$
<i>M</i>	1128.7	1129.9
<i>T/K</i>	170(1)	170(1)
Crystal system	Monoclinic	Monoclinic
Space group	$P2_1/c$ (no. 14)	$P2_1/c$ (no. 14)
<i>a/Å</i>	24.145(2)	24.188(5)
<i>b/Å</i>	24.458(1)	24.412(5)
<i>c/Å</i>	20.160(2)	20.087(4)
$\beta/^\circ$	113.86(1)	113.81(3)
<i>U/Å³</i>	10888(1)	10851(4)
<i>Z</i>	8	8
μ/mm^{-1}	0.97	1.02
Number of reflections measured	86193	85745
Number of reflections observed [$I > 2\sigma(I)$]	17475	17356
Number of independent reflections	25133	25206
<i>R</i> _{final}	0.1239	0.1395

unco-ordinated water molecules. Site occupancy factor (s.o.f.) values of unity were obtained for 9 and 8 molecules, values close to unity (0.80–0.99) for 8 and 9 molecules and lower values for 6 and 7 molecules for the La and Ce.

After overcoming all difficulties mentioned above, we were able to obtain *R* values close to 0.12–0.14. This is a poor result from the crystallographic point of view, but a very important and useful result from the chemical point of view for this type of compounds.⁴⁷ Similar *R* factors were reached for complexes $[\text{LnL}^2]^{+30}$

CCDC reference number 186/1635.

See <http://www.rsc.org/suppdata/dt/1999/3585/> for crystallographic files in .cif format.

Acknowledgements

This work was supported by the Grant Agency of the Czech Republic, Project 203/97/0252, by a grant of the Ministry of Education of the Czech Republic, No. VS96140, programme EU COST D8 and (P.V.) by grant GA UK No. 207/1996/B/CH.

References

- 1 S. Aime, M. Botta, M. Fasano and E. Terreno, *Chem. Soc. Rev.*, 1998, **27**, 19.
- 2 D. Parker, in *Comprehensive Supramolecular Chemistry*, ed. J.-M. Lehn, Pergamon, Oxford, 1996, vol. 1, pp. 487–536.
- 3 V. Alexander, *Chem. Rev.*, 1995, **95**, 273.
- 4 R. B. Lauffer, *Chem. Rev.*, 1987, **87**, 901.
- 5 A. Otte, J. Mueller-Brand, S. Della, E. U. Nitzsche, R. Herrmann and H. R. Maecke, *Lancet*, 1998, **351** 417; J. C. Reubi, B. Waser, J. C. Schaer, U. Laederack, J. Erion, A. Srinivasan, M. A. Schmidt and J. E. Bugaj, *Eur. J. Nucl. Med.*, 1998, **25**, 481; and refs. therein.
- 6 D. Parker and J. A. G. Williams, *J. Chem. Soc., Dalton Trans.*, 1996, 3613.
- 7 J. A. K. Howard, A. M. Kenwright, J. M. Moloney, D. Parker, M. Port, M. Navet, O. Rousseau and M. Woods, *Chem. Commun.*, 1998, 1381.
- 8 D. Parker, P. K. Senanayake and J. A. G. Williams, *J. Chem. Soc., Perkin Trans. 2*, 1998, 2129 and refs. therein; E. Huskowska, C. L. Maupin, D. Parker, J. A. G. Williams and J. P. Riehl, *Enantiomer*, 1997, **2**, 381.
- 9 R. S. Dickens, J. A. K. Howard, C. L. Maupin, J. M. Moloney, D. Parker, J. P. Riehl, G. Siligardi and J. A. G. Williams, *Chem. Eur. J.*, 1999, **5**, 1095 and refs. therein.
- 10 K. P. Wainwright, *Coord. Chem. Rev.*, 1997, **166**, 35.
- 11 S. F. Lincoln, *Coord. Chem. Rev.*, 1997, **166**, 255.
- 12 M. Mayer, V. Dahaoui-Ginderey, C. Lecomte and R. Guillard, *Coord. Chem. Rev.*, 1998, **178–180**, 1313.
- 13 H. Schmitt-Willich, M. Brehm, C. L. J. Ewers, G. Michl, A. Muller-Fahrnow, O. Petrov, J. Platzek, B. Raduchel and D. Sulzle, *Inorg. Chem.*, 1999, **38**, 1134 and refs. therein.
- 14 E. Tóth, L. Helm, K. E. Kellar and A. E. Merbach, *Chem. Eur. J.*, 1999, **5**, 1202; R. S. Ranganathan, M. E. Fernandez, S. I. Kang,

- A. D. Nunn, P. C. Ratsep, K. M. R. Pillai, X. Zhang and M. F. Tweedle, *Invest. Radiol.*, 1998, **33**, 779.
- 15 E. Tóth, D. Pubanz, S. Vauthey, L. Helm and A. E. Merbach, *Chem. Eur. J.*, 1996, **2**, 1607.
- 16 C. F. G. C. Geraldès, A. D. Sherry and G. E. Kiefer, *J. Magn. Reson.*, 1992, **97**, 290.
- 17 C. F. G. C. Geraldès, A. D. Sherry, I. Lázár, A. Miseta, P. Bogner, E. Berenyi, B. Sumegi, G. E. Kiefer, K. McMillan, F. Maton and R. N. Muller, *Magn. Reson. Med.*, 1993, **30**, 696.
- 18 S. Aime, A. S. Batsanov, M. Botta, J. A. K. Howard, D. Parker, K. Senanayake and J. A. G. Williams, *Inorg. Chem.*, 1994, **33**, 4696.
- 19 S. Aime, M. Botta, D. Parker and J. A. G. Williams, *J. Chem. Soc., Dalton Trans.*, 1995, 2259.
- 20 S. Aime, M. Botta, D. Parker and J. A. G. Williams, *J. Chem. Soc., Dalton Trans.*, 1996, 17.
- 21 (a) D. Parker, K. Pulukkody, T. J. Norman, A. Harrison, L. Royle and C. Walker, *J. Chem. Soc., Chem. Commun.*, 1992, 1441; (b) K. Pulukkody, T. J. Norman and C. J. Broan, *J. Chem. Soc., Perkin Trans. 2*, 1993, 605.
- 22 C. J. Broan, E. Cole, K. J. Jankowski, D. Parker, K. Pulukkody, B. A. Boyce, N. R. A. Beeley, K. Millar and A. T. Millican, *Synthesis*, 1992, 63; T. J. Norman, D. Parker, L. Royle, A. Harrison, P. Antoniw and D. J. King, *J. Chem. Soc., Chem. Commun.*, 1995, 1877; T. J. Norman, D. Parker, F. C. Smith and D. J. King, *J. Chem. Soc., Chem. Commun.*, 1995, 1879.
- 23 A. D. Sherry, J. Ren, J. Huskens, E. Brücher, E. Tóth, C. F. G. C. Geraldès, M. M. C. A. Castro and W. P. Cacheris, *Inorg. Chem.*, 1996, **35**, 4604.
- 24 J. Ren and A. D. Sherry, *Inorg. Chim. Acta*, 1996, **246**, 331.
- 25 J. G. Van Emous, M. G. J. Nederhoff, T. J. C. Ruigrok and C. J. A. Van Echeld, *J. Mol. Cell Cardiol.*, 1997, **29**, and refs. therein.
- 26 S. Aime, M. Botta, S. G. Crich, G. Giovenzana, R. Pagliari, M. Sisti and E. Terreno, *Magn. Reson. Chem.*, 1998, **36**, S200.
- 27 J. Rohovec, I. Lukeš, P. Vojtišek, I. Čišařová and P. Hermann, *J. Chem. Soc., Dalton Trans.*, 1996, 2685.
- 28 K. Bazakas and I. Lukeš, *J. Chem. Soc., Dalton Trans.*, 1995, 1133.
- 29 J. Rohovec, M. Kývala, P. Vojtišek, P. Hermann and I. Lukeš, *Eur. J. Inorg. Chem.*, accepted for publication.
- 30 S. Aime, A. S. Batsanov, M. Botta, R. S. Dickens, S. Falkner, C. E. Foster, A. Harrison, J. A. K. Howard, J. M. Moloney, T. J. Norman, D. Parker and J. A. G. Williams, *J. Chem. Soc., Dalton Trans.*, 1997, 3623.
- 31 J. Rohovec, P. Vojtišek, P. Hermann, V. Havlíček and I. Lukeš, unpublished results.
- 32 S. L. Wy and W. deW. Horrocks, *Inorg. Chem.*, 1995, **34**, 3724.
- 33 E. Tóth, E. Brucher, I. Lázár and I. Tóth, *Inorg. Chem.*, 1994, **33**, 4070.
- 34 S. Aime, A. Barge, F. Benetollo, G. Bombieri, M. Botta and F. Uggeri, *Inorg. Chem.*, 1997, **36**, 4287.
- 35 W. D. Kim, G. E. Kiefer, J. Huskens and A. D. Sherry, *Inorg. Chem.*, 1997, **36**, 4128.
- 36 K. A. Gschneidner and L. R. Eyring, *Handbook on the Physics and Chemistry of Rare Earths* Elsevier, Amsterdam, 1996, vol. 23.
- 37 B. Bleaney, *J. Magn. Reson.*, 1972, **8**, 91; C. N. Reilly, B. W. Good and R. D. Allendoerfer, *Anal. Chem.*, 1976, **48**, 1446; C. N. Reilly, B. W. Good and J. F. Desreux, *Anal. Chem.*, 1975, **47**, 2110.
- 38 J. Rohovec, P. Hermann and I. Lukeš, unpublished results.
- 39 H. Guenter, *NMR Spectroscopy*, Georg Thieme, Stuttgart, 1980.
- 40 (a) C. C. Bryden and C. N. Reilly, *Anal. Chem.*, 1982, **54**, 610; (b) M. Albin, W. DeW. Horrocks, Jr. and F. J. Liotta, *Chem. Phys. Lett.*, 1982, **85**, 61.
- 41 M. K. Kuya and O. A. Serra, *J. Coord. Chem.*, 1980, **10**, 13.
- 42 M. Murru, D. Parker, G. Williams and A. Beeby, *J. Chem. Soc., Chem. Commun.*, 1993, 1116.
- 43 W. deW. Horrocks and D. R. Sudnick, *J. Am. Chem. Soc.*, 1979, **101**, 334; *Acc. Chem. Res.*, 1981, **14**, 384.
- 44 A. Beeby, I. M. Clarkson, R. S. Dickens, S. Faulkner, D. Parker, L. Royle, A. S. de Sousa, J. A. G. Williams and M. Woods, *J. Chem. Soc., Perkin Trans. 2*, 1999, 493; D. Parker, K. P. Senanayake and J. A. G. Williams, *J. Chem. Soc., Perkin Trans. 2*, 1998, 2129; D. Parker and J. A. G. Williams, *Chem. Commun.*, 1998, 245; D. Parker, K. P. Senanayake and J. A. G. Williams, *Chem. Commun.*, 1997, 1777; R. S. Dickens, T. Gunnlaugsson, D. Parker and R. D. Peacock, *Chem. Commun.*, 1998, 1643.
- 45 J. Bornais and S. Brownstein, *J. Magn. Reson.*, 1978, **29**, 207; A. L. van Geet, *Anal. Chem.*, 1970, **42**, 679; 1968, **40**, 2227.
- 46 G. M. Sheldrick, SHELXL 97, University of Göttingen, 1997.
- 47 F. Renaud, C. Piguet, G. Bernardelli, J. C. G. Bunzli and G. Hofgärtner, *Chem. Eur. J.*, 1997, **3**, 1660; C. Piguet, G. Bernardelli and G. Hofgärtner, *Chem. Rev.*, 1997, **97**, 2005.